

portfolio



perla antoniak

GCCA



professional

FAP



CURA



R.L.

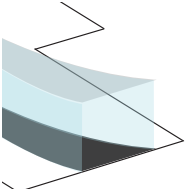


THESIS

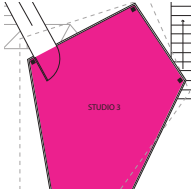


school

UNSW



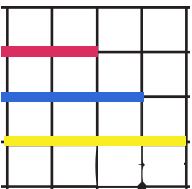
SOUND ROOM



FIESTA CHAIR



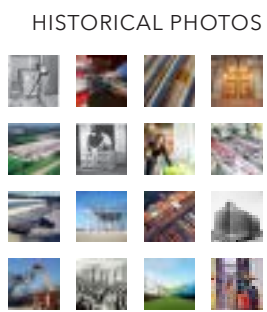
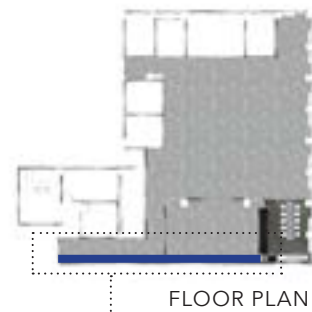
KIT OF PARTS



PHOTOGRAPHY



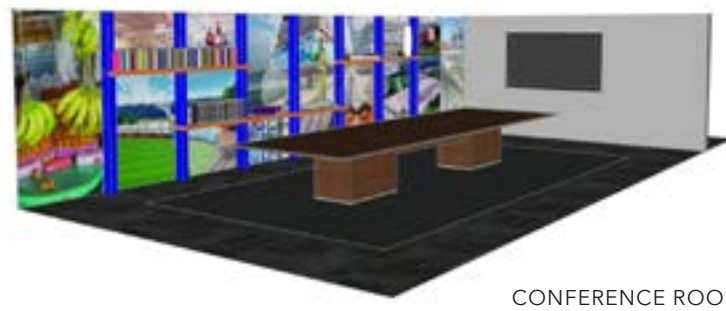
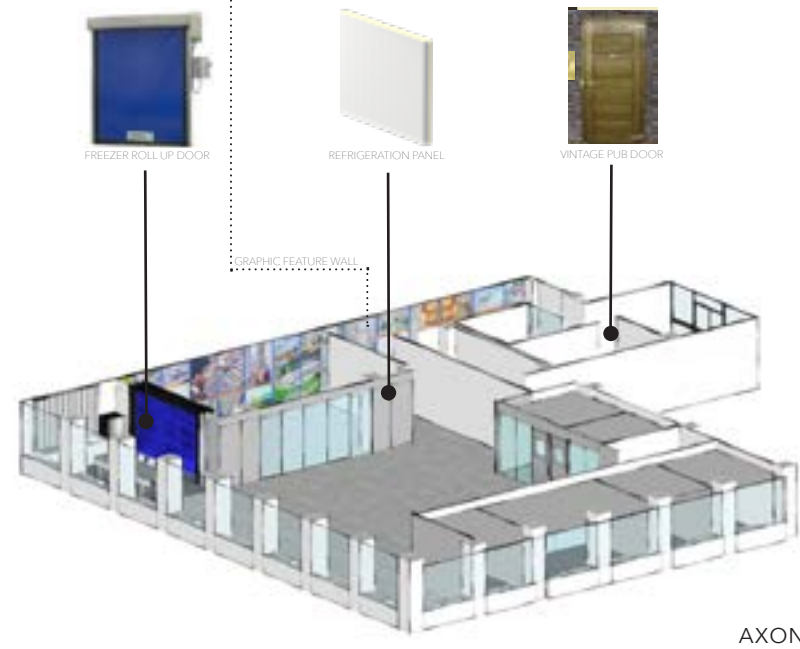
photography



+



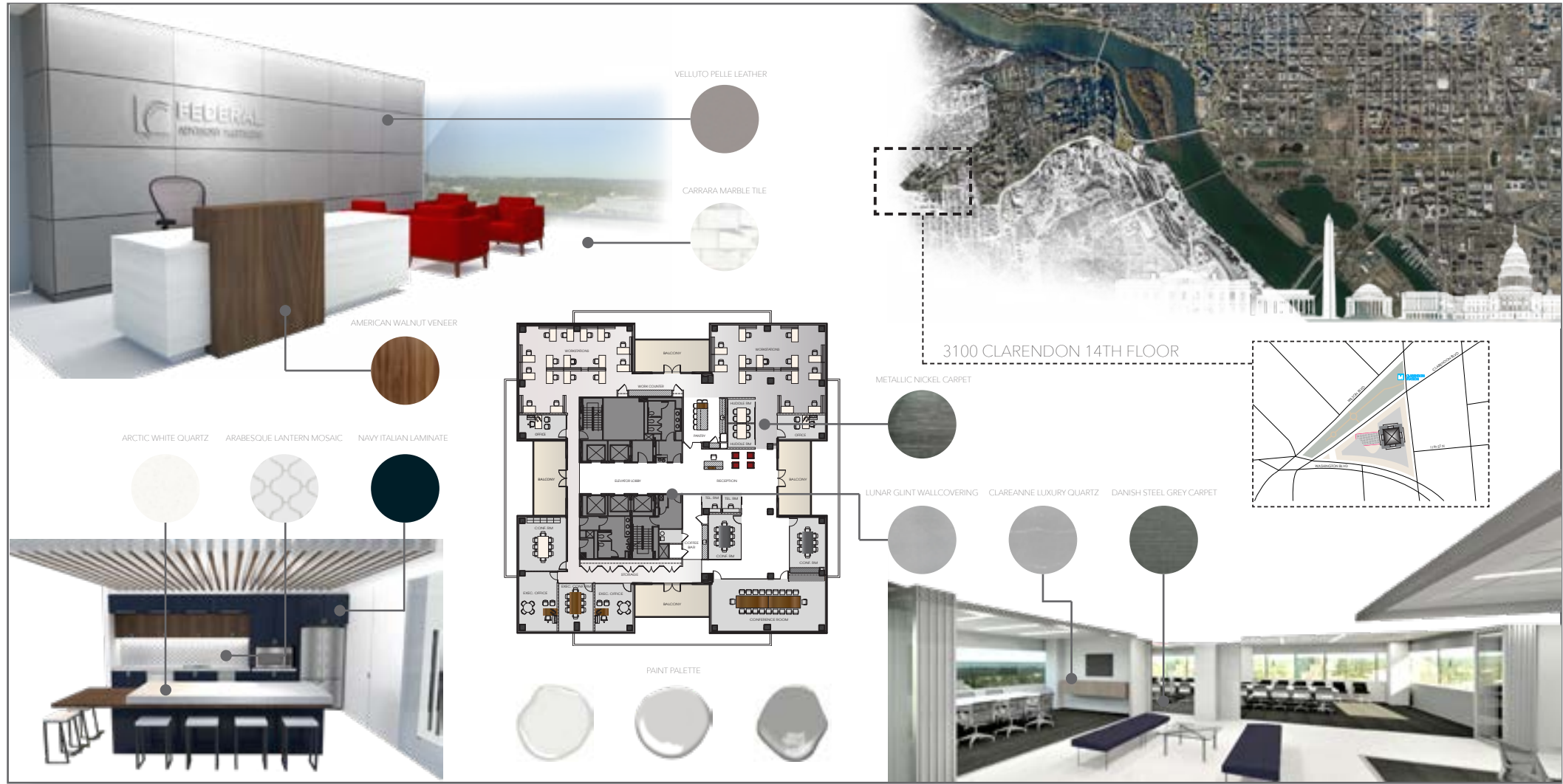
+



**ABOUT:** A dynamic office space using Global Cold Chain Alliance refrigeration and storage products including a feature wall telling the history of the company.

**FIRM:** EMA  
**DATE:** 06.19  
**LOCATION:** Arlington, VA  
**TYPE:** Office  
**CONTRIBUTION:** Graphics + Finishes

G C C A



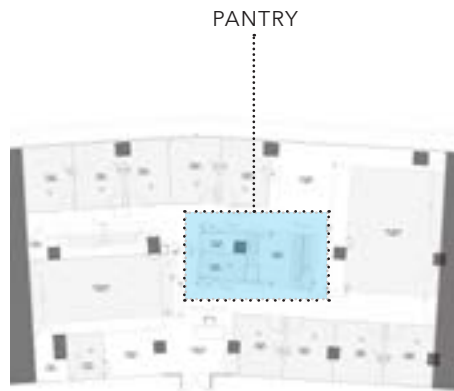
**ABOUT:** A digital design board showing the floor plan, 3D renderings, and finish materials for Federal Advisory Partners' newly renovated, high end office space.

**FIRM:** EMA  
**DATE:** 06.18  
**LOCATION:** Arlington, VA  
**TYPE:** Office  
**CONTRIBUTION:** Digital Design Board + Finishes



F A P

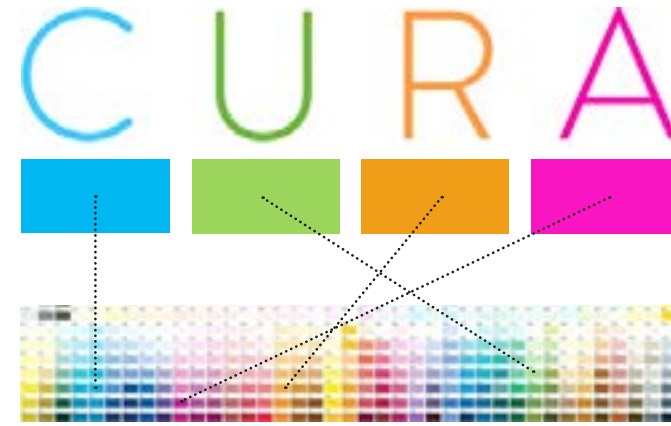




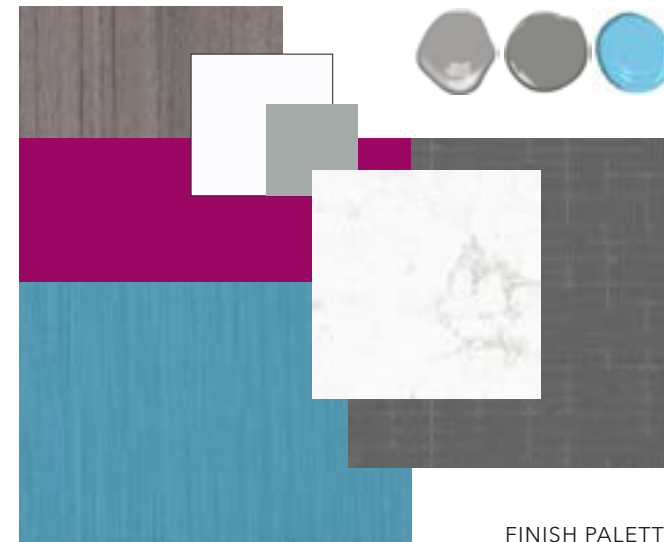
FLOOR PLAN



3D VIEW - PANTRY



COLOR MATCH BRANDING



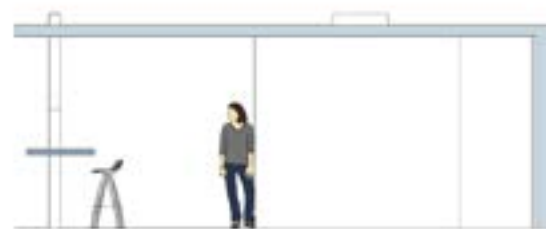
FINISH PALETTE



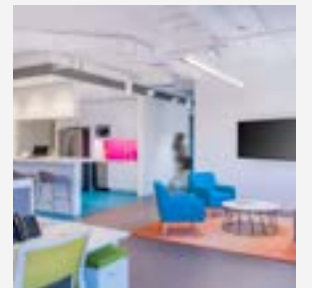
SIDE ELEVATION



FRONT ELEVATION



SIDE ELEVATION



**ABOUT:** Featuring the CURA Strategies brand's colors, an energizing, collaborative, and modern office space that revolves around a custom open pantry.

**FIRM:** EMA  
**DATE:** 03.18  
**LOCATION:** Arlington, VA  
**TYPE:** Office  
**CONTRIBUTION:** 3D Pantry Design + Finishes

C U R A



\* RENDERINGS BY KCCT + SHALOM BARANES



ELEVATION: RECEPTION



ELEVATION: LOUNGE



ELEVATION: YOGA STUDIO



CUSTOM GRAPHIC

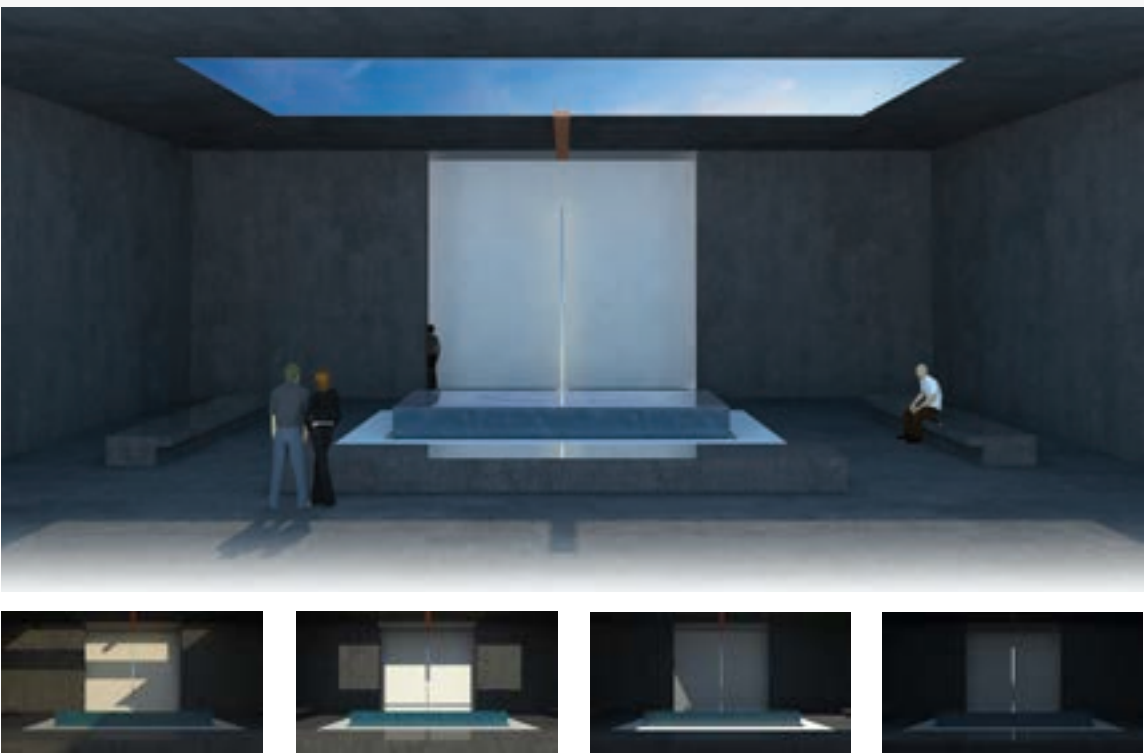
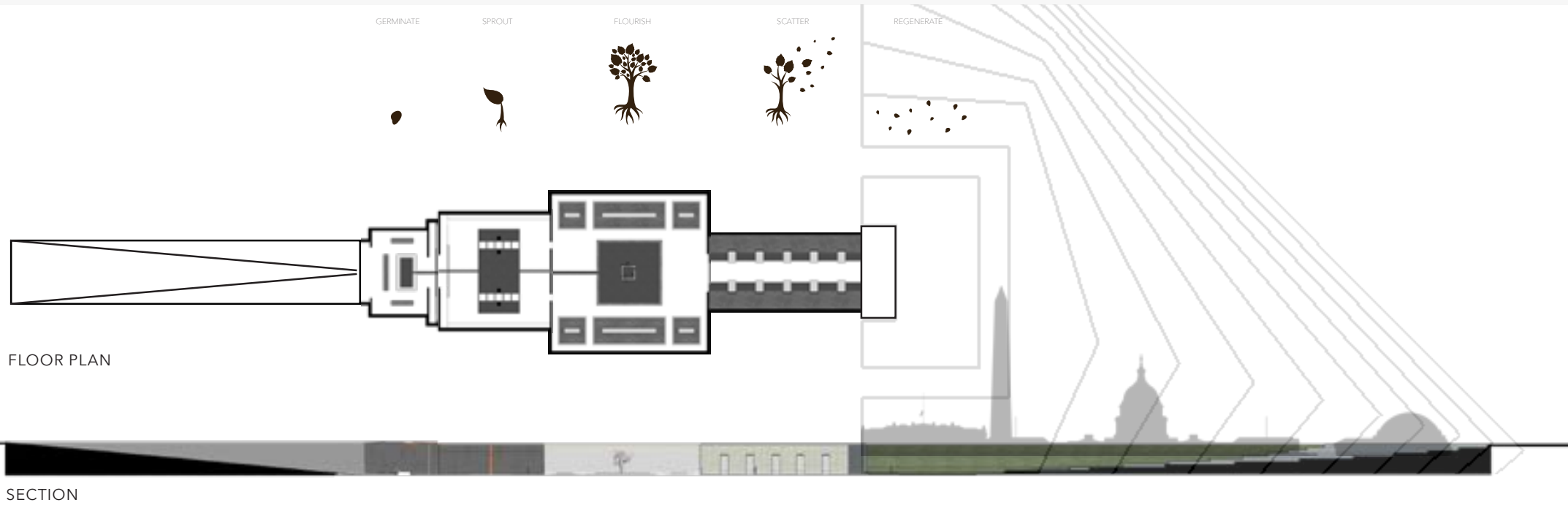


**ABOUT:** Luxury condominiums located along the historical Alexandria waterfront call for sophisticated architectural design and the finest furnishings.

**FIRM:** KCCT  
**DATE:** 09.16  
**LOCATION:** Alexandria, VA  
**TYPE:** Luxury Condominiums  
**CONTRIBUTION:** 3D Design + Graphics + Finishes

# ROBINSON LANDING





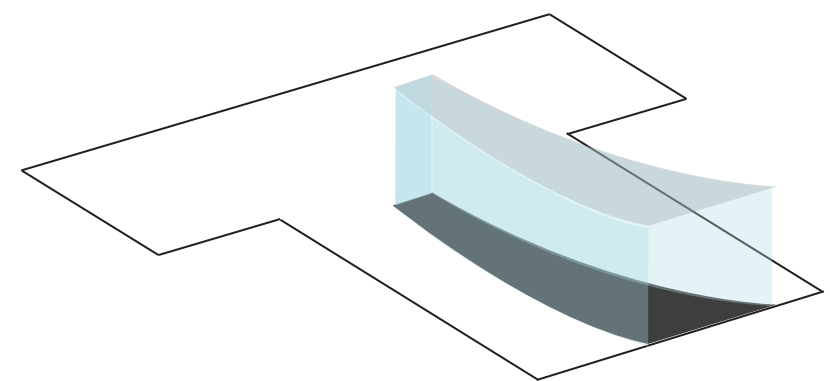
**ABOUT:** Iter In Terra – Latin for “passage through earth” - is a place of meditation based on the study of architecture and light. Located on the National Mall in Washington, DC, this successive group of spaces is a journey underground based on the five cycles of life. It is a place to connect with a higher power for reflection and thought. It can be a solo journey, or communal, both in times of tragedy or celebration.

GERMINATE SPROUT FLOURISH SCATTER REGENERATE

Depending on the time of day, season, and weather, no two experiences will ever be the same.

**SCHOOL:** GWU  
**DATE:** 05.15  
**TYPE:** Landscape

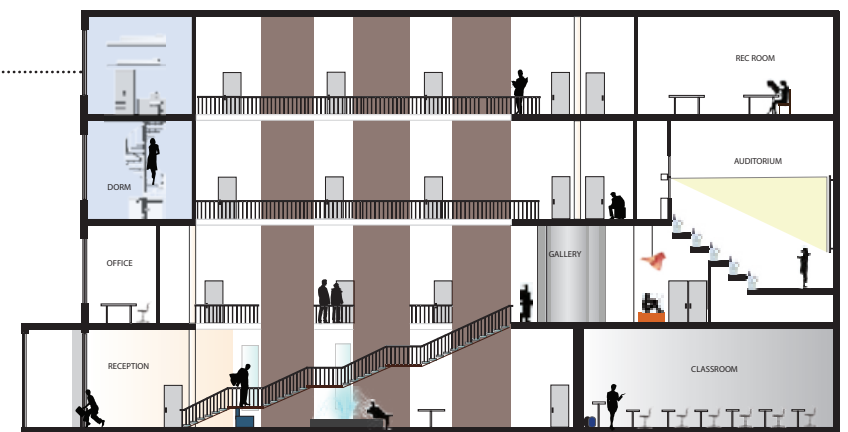
**T H E S I S**  
**I T E R I N T E R R A**  
passage through earth



ATRIUM



DORMS



SECTION



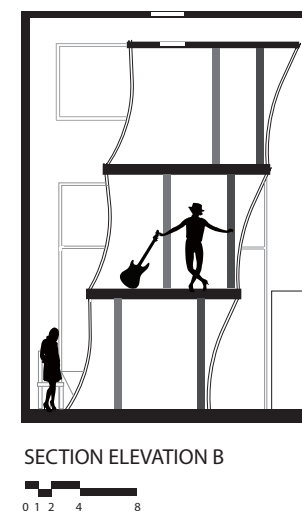
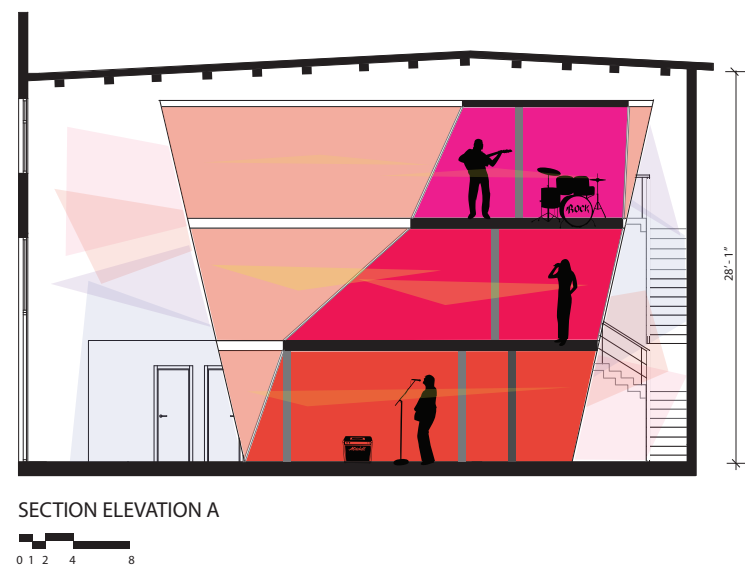
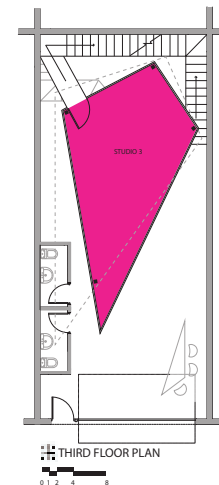
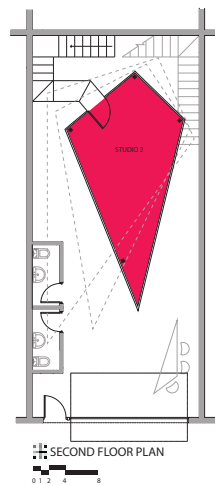
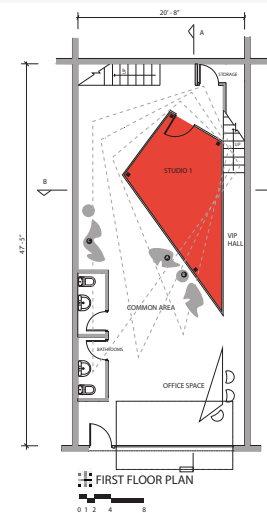
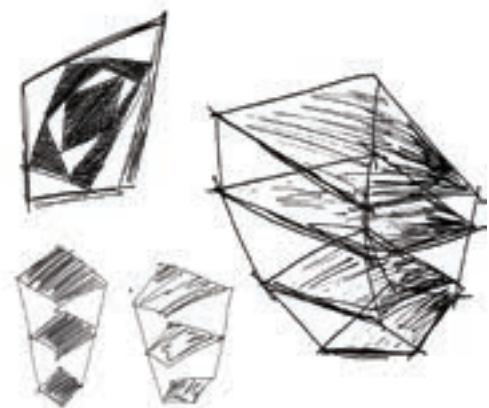
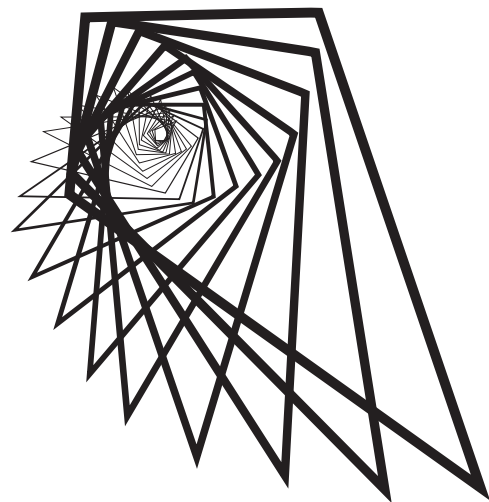
ART GALLERY

**ABOUT:** A four level satellite campus including a feature staircase, atrium, auditorium, art gallery, offices and student dormitories.

**SCHOOL:** GWU  
**DATE:** 12.14  
**TYPE:** Institutional

U N S W

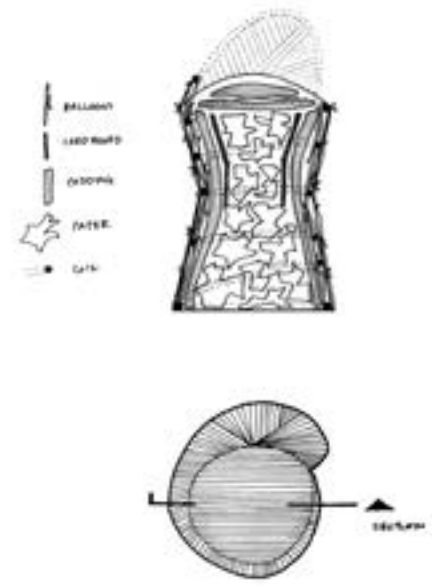
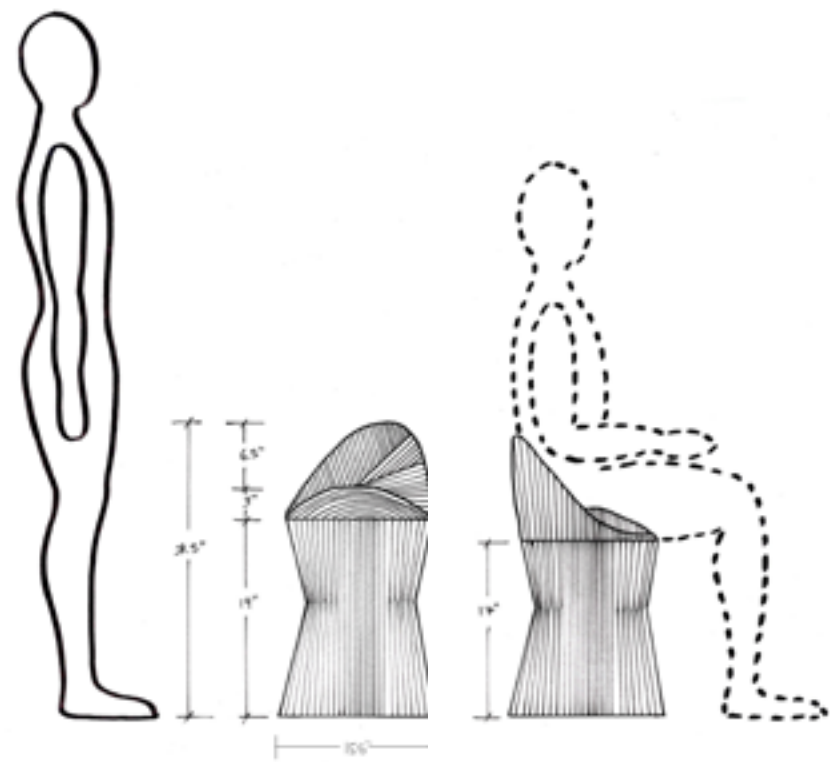




**ABOUT:** A dynamic multi-level music studio built within a warehouse with architectural acoustical properties for recording.

**SCHOOL:** GWU  
**DATE:** 07.14  
**TYPE:** Warehouse Music Studio

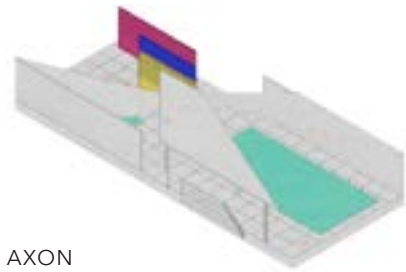
# SOUND ROOM



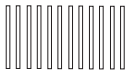
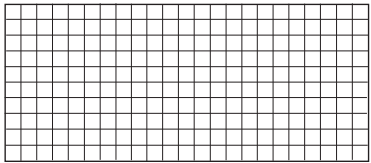
**ABOUT:** A life size chair designed and built from multiples of everyday objects.

**SCHOOL:** GWU  
**DATE:** 03.14  
**TYPE:** Furniture Design  
\*Teammate - Danielle Stewart

# FIESTA CHAIR



AXON



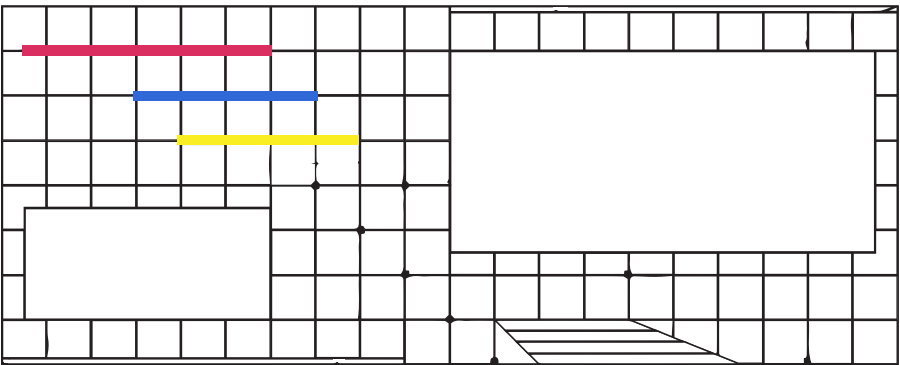
KIT OF PARTS



SIDE ELEVATION



FRONT ELEVATION



FLOOR PLAN

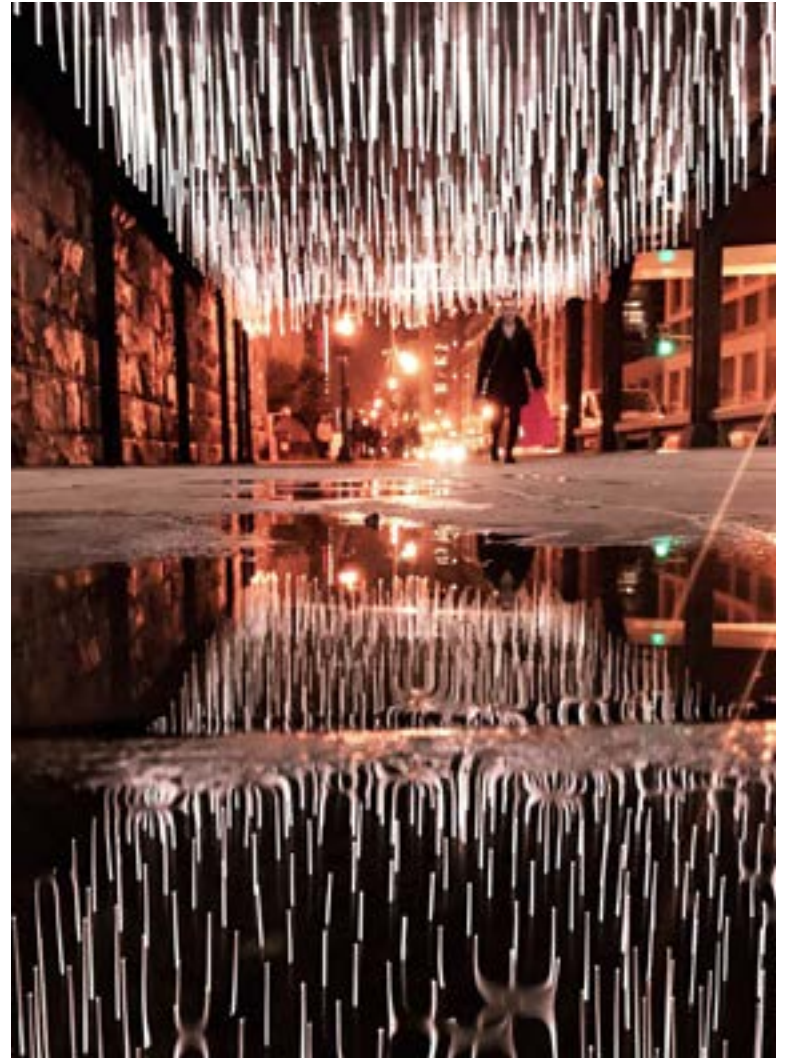
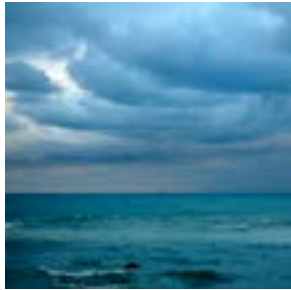


**ABOUT:** A kit of parts based on the Barcelona Pavilion using wood and glass strategically placed in a grid to create a euphoric experience with light and water.

**SCHOOL:** GWU  
**DATE:** 09.13  
**TYPE:** Model Building

# KIT OF PARTS





**ABOUT:** Documenting intimate, magical moments in life throughout the world. Featuring: Washington, DC, Hawaii, India and Egypt.

**DATE:** 2004 - 2019  
**LOCATION:** Worldwide  
**TYPE:** BW Film, Digital SLR

P H O T O G R A P H Y